
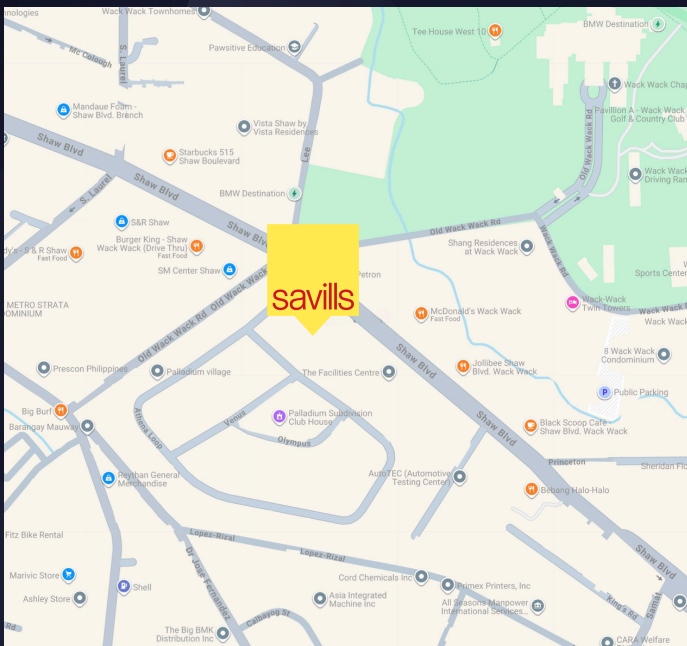


**OFFICE OPPORTUNITY  
FOR SALE OR LEASE**

# Summit One Office Tower

 **530 Shaw Boulevard,  
Mandaluyong City**

Summit One Office Tower offers a prime opportunity to acquire or lease office space within a PEZA-accredited development strategically located along Shaw Boulevard in Mandaluyong City.



The offering consists of **29 titled office units and 70 parking slots** within a 46-storey office tower, ideal for investors, occupiers, and businesses seeking a highly accessible address in a key Metro Manila business corridor.

**savills**

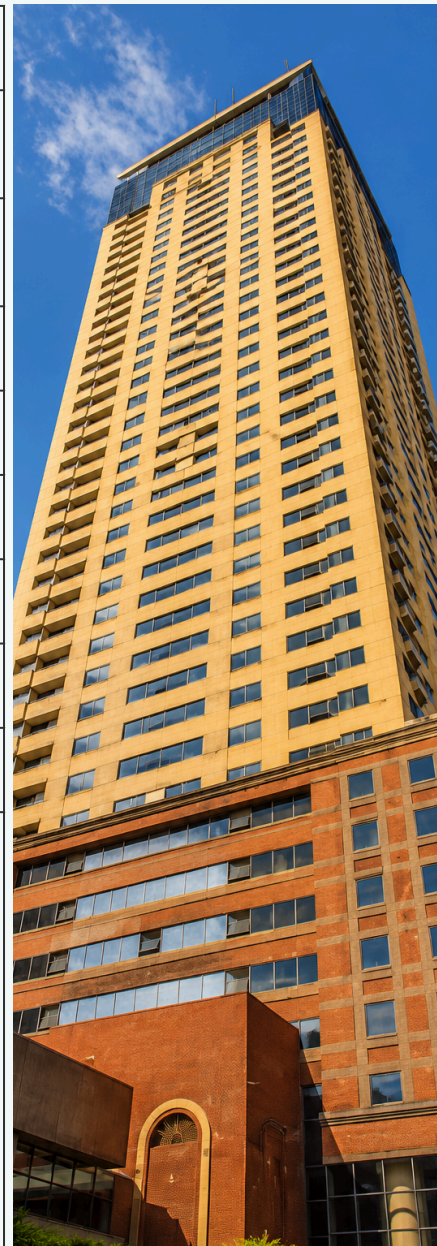


OFFICE OPPORTUNITY FOR SALE OR LEASE

# Summit One Office Tower



<b>Property Type</b>	Office Condominium
<b>Location</b>	530 Shaw Boulevard, Mandaluyong City
<b>Building Profile</b>	46-Storey Office Tower with 9-Level Parking Podium
<b>PEZA Accreditation</b>	PEZA-Registered IT Zone
<b>Units Offered</b>	29 Titled Office Units
<b>Parking Offered</b>	70 Parking Slots
<b>Gross Floor Area</b>	6,960.59 sq m
<b>Net Leasable Area</b>	6,207.65 sq m
<b>Current Occupancy</b>	91%
<b>Key Building Features</b>	<ul style="list-style-type: none"><li>• PEZA-Registered Office Tower</li><li>• 24/7 Building Operations &amp; Security</li><li>• Full Backup Power</li><li>• Fiber-Ready Connectivity</li><li>• High-Speed Elevators</li><li>• Water-Cooled AC System</li><li>• Advanced Fire Protection System</li><li>• Professional Property Management</li></ul>



Strategically located within one of Metro Manila's established commercial corridors, Summit One Office Tower offers flexible opportunities for both investment and business operations, with strong accessibility, premium building features, and long-term value potential.

For sale or lease inquiries, please contact:



**JOHN CORPUS**

(+63) 989-564-5636

[john@savillsp.com](mailto:john@savillsp.com)



**AICELYN BONIFACIO**

(+63) 956-451-8264

[aicelyn.bonifacio@savillsp.com](mailto:aicelyn.bonifacio@savillsp.com)